

APEIRON
art · design · architecture



for those who love challenges



For those who can see beyond.



An aerial photograph of a dense forest at dusk or dawn. The trees are mostly dark, but several are illuminated from below, creating a glowing yellow effect. The lighting creates a strong contrast between the dark foliage and the bright highlights.

For those who look for beauty. Everywhere.

This is the concept underpinning our artistic research: drawing inspiration from Nature in all its manifestations, **Studio Apeiron** designs and produces one-of-a-kind or **limited edition pieces of furniture**, while experimenting and promoting culture in contemporary art, design and architecture.

The name Apeiron comes from ancient Greek and means “that which has no limit, infinite, unbounded”. In Anaximander’s philosophy, it represents the “arché”, that is, the origin and the foundation principle of the universe. For us, it is an approach to art that has no mental boundaries and is open to dialogue and exploration.

Our approach is rooted in environmental awareness and ecosystem preservation: this is why all our projects are oriented towards these goals.

Care for the Earth, care for the people and fair share are the beliefs that shape our philosophy. In 2015 we started our own local, circular wood supply chain, from tree cutting to production, where CO2 emissions are compensated by planting trees in marginal land.

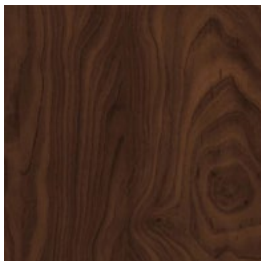
We create high quality design products that have a **story to tell**: the story of our care for the environment, our study of nature, our constant research for unique materials and meaningful ideas for our projects.



Works

MATERIALS

We use only 100% natural or recyclable materials.



WOOD



GLASS



MARBLE



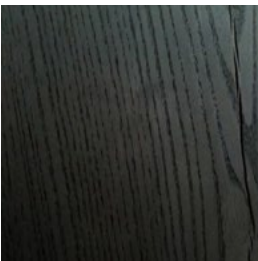
IRON

NATURAL FINISHES

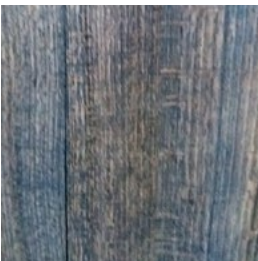
Finishes of vegetable and natural origin like :
linseed oil, beeswax, fire and crystals.



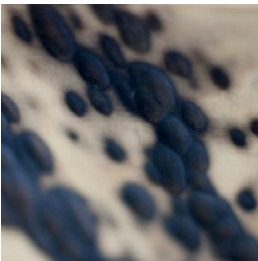
GOLD



SHOU SUGI BAN



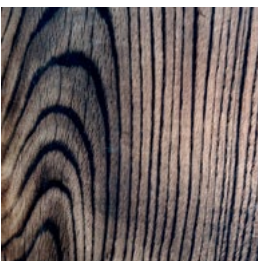
OXIDIUM



DALMATA



PITTORICO



OPTICAL

We experiment and study new finishing techniques.
We observe physical and chemical behaviour of the material , its
material and chromatic qualities and its aesthetic characteristics.

Leaf table



Part of the collection designed by artist Dario Brivio
MATERIALS: Wood: Sipo mahogany from India.



Leaf B



Part of the collection designed by artist Dario Brivio
MATERIAL: Mahogany wood.
Rusted iron structure.
DIMENSIONS: LENGTH 140 cm, WIDTH 60 cm, HEIGHT 40 cm.



Martinez



Part of the collection designed by artist DaNIELE MARTINEZ

MATERIAL: Cedar of lebanon wood.

DIMENSIONS: LENGTH 110 cm, WIDTH 45 cm, HEIGHT 45cm.

NOTE: beeswax polish.



Blue table



MATERIALS: Chestnut wood.

Extralight glass base.

DIMENSIONS: LENGTH 200 cm, WIDTH 90 cm.

SINGLE WOODEN PLANK THICKNESS: 5 cm.

NOTES: beeswax polish.



Goccia



MATERIAL: Elm wood.
Opaque black iron structure.
DIMENSIONS: LENGTH 130 cm, WIDTH 45 cm, HEIGHT 40 cm.
NOTES: Customisable finish.



Skate



MATERIALS: Cedar of lebanon wood.
Carrara marble details.
DIMENSIONS: LENGTH 150 cm, WIDTH 45 cm, HEIGHT 45 cm.
NOTES: Customisable finish.



Statuario



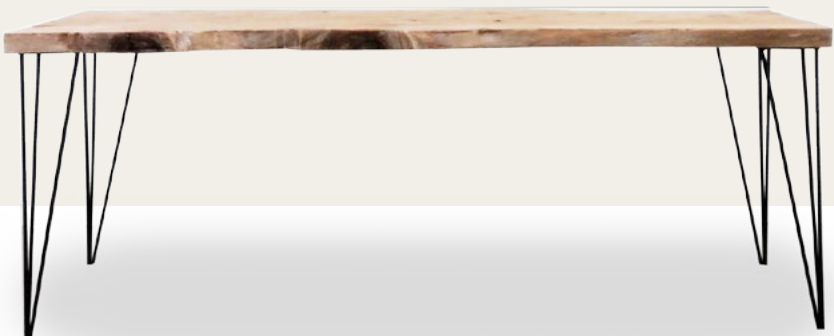
MATERIALS: Sipo mahogany from India wood.
Carrara marble 50 x 130 x 70.

DIMENSIONS: LENGTH 430 cm, WIDTH 140 cm HEIGHT 75 cm.

NOTES: customisable finish.



Piramidi



MATERIALS: Cedar of Lebanon wood, local red oak.
Opaque black coating.

DIMENSIONS: LENGTH 180, WIDTH 70W cm, HEIGHT 75 cm.

Thickness of wooden planks: 6 cm

NOTES: customisable finish OXIDUM.



Trono



MATERIALS: Poplar root wood (XVII century).

Carrara marble details.

DIMENSIONI: Diameter 90 cm, Height 55 cm.

NOTES: customisable finish.



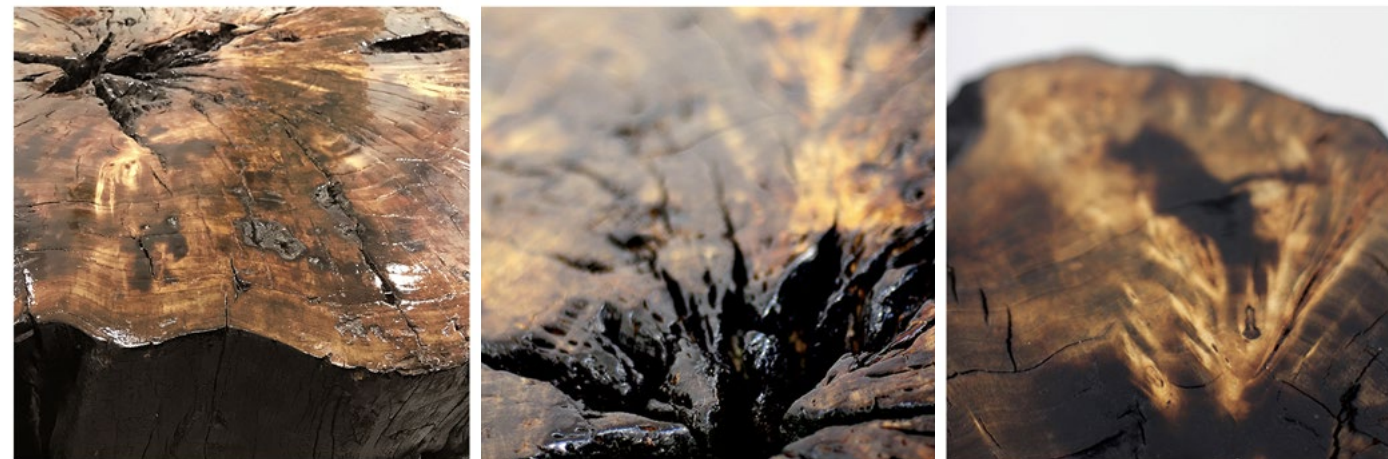
Cratere



MATERIAL: Poplar root wood (XVII century)

DIMENSIONS: Diameter 110 cm, height 45 cm

NOTE: Finish with Shou sugi ban technique.



Tornado

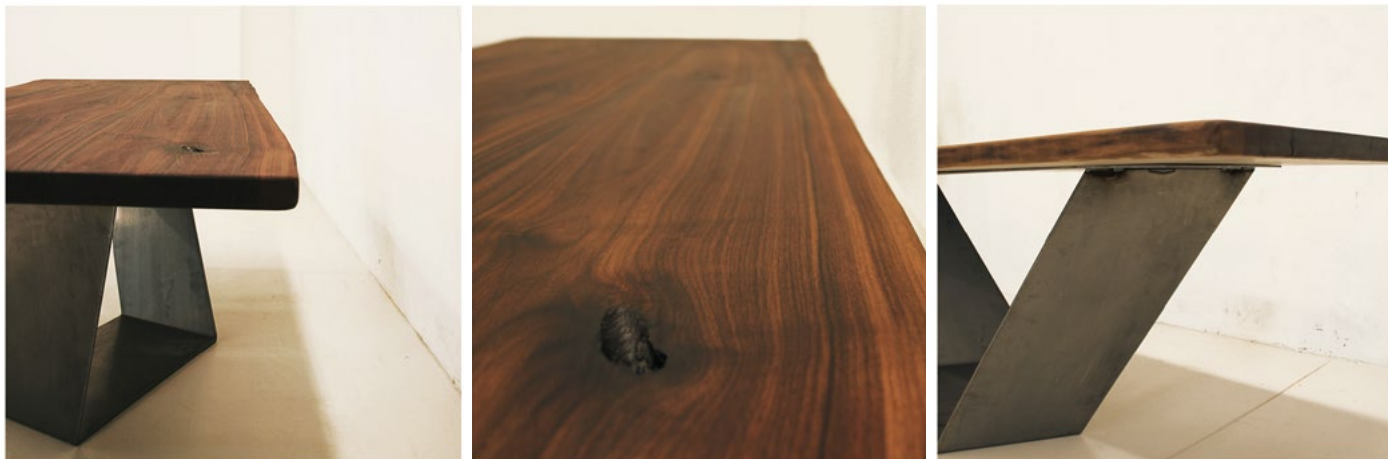


MATERIALS: Canaletto walnut wood.
Bent iron structure - powder coating.

DIMENSIONS: LENGTH 240 cm, WIDTH 90 cm.

SINGLE WOODEN PLANK THICKNESS: 4 cm.

NOTES: Beeswax and oil polish.



Radical Black



MATERIALS: Cedar of Lebanon wood.
Rusted bent iron structure

DIMENSIONS: LENGTH 210 cm, WIDTH 90 cm.

SINGLE WOODEN PLANK THICKNESS: 5 cm.

NOTES: Beeswax and oil polish.



Regina



MATERIALS: Local oak root wood.
DIMENSIONS: Diameter 70 cm, height 45cm.
NOTES: Finish with Shou sugi ban technique.

Console geometrica



MATERIALS: Wood: 1 pc. Sipo mahogany from India (year 1960)
2 pcs oak (year 1960)
METAL: opaque BLACK iron legs
DIMENSIONS: LENGTH200CM, WIDTH 45CM, HEIGHT 80CM
NOTES: customisable finish



Montagna



MATERIALS: Walnut, Mahogany, Oak, Cedar, Poplar wood.
Iron structure.

DIMENSIONS: LENGTH 200 cm, WIDTH 30 cm, HEIGHT 240 cm.
SINGLE WOODEN PLANK THICKNESS: 4 cm.
NOTES: beeswax and oil polish.



Blow



Part of the collection designed by artist Dario Brivio
MATERIALS: Wood: cedar of Lebanon.
GLASS: clear plexiglass legs, diameter 10 cm.
TREE SCULPTURE: blown glass.
DIMENSIONS: diameter 90 cm, height 45 cm.
NOTES: beeswax polish.



Pamela Cucchi



MATERIALS: Larch Wood.

White painted leg by artist Pamela Cucchi.

DIMENSIONS: LENGTH 30 cm, WIDTH 30 cm, HEIGHT 45 cm.

SINGLE WOODEN PLANK THICKNESS: 4 cm.

NOTES: Beeswax and oil polish.

